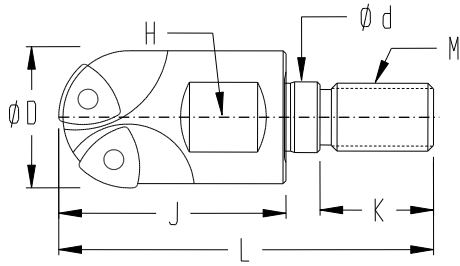
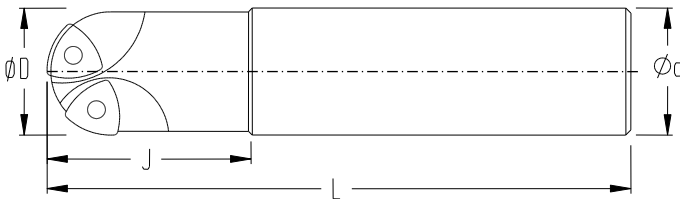


球型粗銑刀 (接合式&直柄)

BALL NOSE MILLING CUTTER



SPECIFICATION	φD	J	φd	L	M	K	H	刀片規格 INSERTS	刀片螺絲 INSERT SCREW	板手 WRENCH	刃數 NO.OF INSERT
BMC16R080M08	16	30	8.5	50	M8	15	12	218.19-080T-M04	IS220530	T 7	2
BMC20R100M10	20	35	10.5	56	M10	15	15	218.19-010T-M06	IS250638	T 8	
BMC25R125M12	25	40	12.5	66	M12	20	20	218.19-0125T-T3-M07	IS300845	T 9	
BMC32R160M16	32	40	17	68	M16	22	27	218.19-160T-04-M08	IS350855	T 15	
BMC40R200M22	40	40	25	75	M22	25	35	218.19-200T-05-M10	IS451166	T 20	



規格 SPECIFICATION	φD	J	φd	L	刀片規格 INSERTS	刀片螺絲 INSERT SCREW	板手 WRENCH	刃數 NO. OF INSERT
BMC16R080ST16	16	30	16	150	218.19-080T-M04	IS220530	T 7	2
BMC20R100ST20	20	35	20	165	218.19-010T-M06	IS250638	T 8	
BMC25R125ST25	25	40	25	185	218.19-0125T-T3-M07	IS300845	T 9	
BMC32R160ST32	32	50	32	210	218.19-160T-04-M08	IS350855	T 15	
BMC40R200ST42	40	60	42	250	218.19-200T-05-M10	IS451166	T 20	

建議切削條件一覽表 Recommended Cutting Conditions

工件材質 Workpiece Material	Roughing 粗加工		
	速度 Speed Vc (m / min)	每迴轉進給 Feed (mm / rev.)	最大切削深度 max. D.O.C (mm)
Unalloyed steels 一般碳鋼	120 - 235	0.08 - 0.24	D / 2
Alloyed steels 合金鋼	70 - 150	0.08 - 0.22	D / 2
Stainless steels 不鏽鋼	100 - 180	0.08 - 0.20	D / 2
Cast Irons 鑄鐵	120 - 395	0.08 - 0.24	D / 2
Non-feric metal 鋁, 銅, 鎂等非鐵金屬	250 - 450	0.08 - 0.25	D / 2