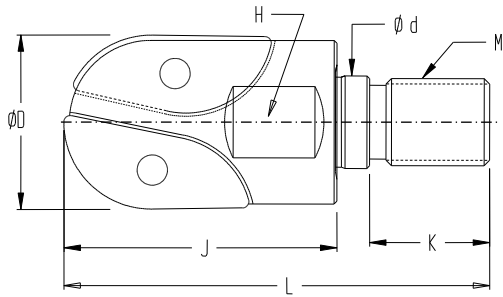


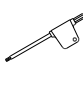
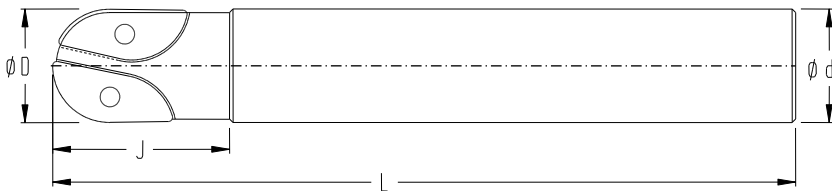


球型粗銑刀 (接合式&直柄)
BALL NOSE MILLING CUTTER



規格 SPECIFICATION	φD	J	φd	L	M	K	H	刀片規格 INSERTS	刀片螺絲 INSERT SCREW	板手 WRENCH	刃數 NO.OF INSERT
											
BRM20XP20M10	20	35	10.5	56	M10	15	15	XPNT20/20T306.R-C	IS300842	T 9	2
BRM25XP25M12	25	40	12.5	66	M12	20	20	XPNT25/250408.R-C	IS401050	T15	
BRM32XP32M16	32	50	17	78	M16	22	27	XPNT32/320612.R-C	IS501170	T 20	



規格 SPECIFICATION	φD	J	φd	L	刀片規格 INSERTS	刀片螺絲 INSERT SCREW	板手 WRENCH	刃數 NO. OF INSERT
								
BRM20XP20ST20	20	35	20	165	XPNT20/20T306.R-C	IS300842	T 9	2
BRM25XP25ST25	25	40	25	185	XPNT25/250408.R-C	IS401050	T15	
BRM32XP32ST32	32	50	32	210	XPNT32/320612.R-C	IS501170	T 20	

建議切削條件一覽表 Recommended Cutting Conditions

工件材質 Workpiece Material	Roughing 粗加工		
	速度 Speed Vc (m / min)	每迴轉進給 Feed (mm / rev.)	最大切削深度 max. D.O.C (mm)
Unalloyed steels 一般碳鋼	120 - 235	0.08 - 0.24	D / 2
Alloyed steels 合金鋼	70 - 150	0.08 - 0.22	D / 2
Stainless steels 不鏽鋼	100 - 180	0.08 - 0.20	D / 2
Cast irons 鑄鐵	120 - 395	0.08 - 0.24	D / 2
Non-ferrous metal 鋁, 銅, 鎂等非鐵金屬	250 - 450	0.08 - 0.25	D / 2