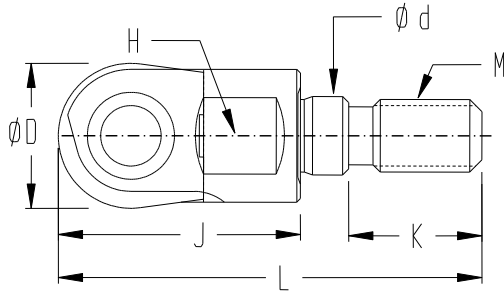
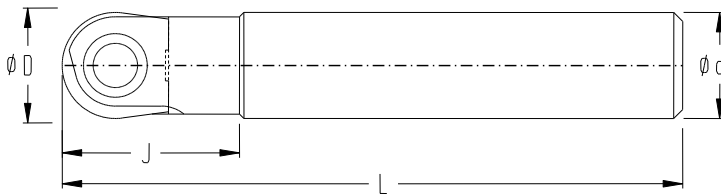


球型精銑刀 (接合式&直柄)

BALL NOSE MILLING CUTTER



規格 SPECIFICATION	φD	J	φd	L	M	K	H	刀片規格 INSERTS	刀片螺絲 INSERT SCREW	板手 WRENCH
BFF12R060M06	12	20	6.5	35	M6	11	9	P3201D12	IS5005-R6	T 20
BFF16R080M08	16	30	8.5	50	M8	15	12	P3201-D16	IS5005-R8	
BFF20R100M10	20	35	10.5	56	M10	15	15	P3201-D20	IS5005-R10	
BFF25R125M12	25	40	12.5	66	M12	20	20	P3201-D25	IS6075-R12.5	



規格 SPECIFICATION	φD	J	φd	L	刀片規格 INSERTS	刀片螺絲 INSERT SCREW	板手 WRENCH
BFF12R060ST12	12	20	12	140	P3201-D12	IS5005-R6	T 20
BFF16R080ST16	16	30	16	150	P3201-D16	IS5005-R8	
BFF20R100ST20	20	35	20	165	P3201-D20	IS5005-R10	
BFF25R125ST25	25	40	25	185	P3201-D25	IS6075-R12.5	

建議切削條件一覽表 Recommended Cutting Conditions

工件材質 Workpiece Material	Finishing 精加工		
	速度 Speed Vc (m / min)	每刃進給 Feed (mm / tooth)	切削深度 D.O.C (mm)
Unalloyed steels 一般碳鋼	180 - 360	0.10 - 0.30	0.1 - D/16
Alloyed steels 合金鋼	110 - 240	0.10 - 0.30	0.1 - D/16
Stainless steels 不鏽鋼	140 - 240	0.10 - 0.20	0.1 - D/16
Cast Irons 鑄鐵	100 - 160	0.08 - 0.20	0.1 - D/16
Non-ferric metal 鋁、銅、鎂等非鐵金屬	400 - 1000	0.10 - 0.30	0.1 - D/16