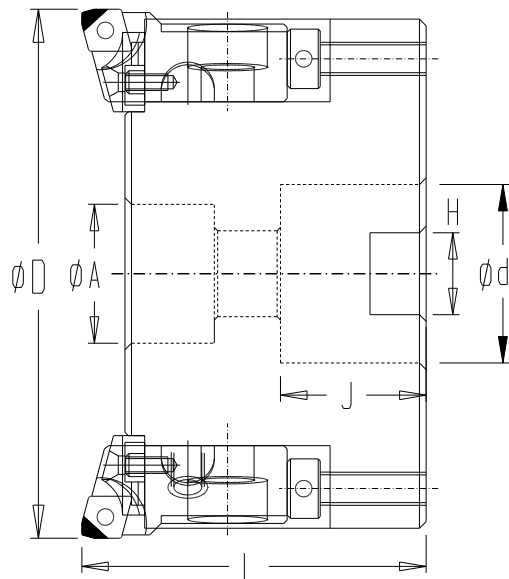


高速面銑刀 HIGH SPEED FACE MILLING CUTTER

(鋁合金本體 ALUMINIUM ALLOY BODY)



規格 SPECIFICATION	ϕD	ϕd	J	L	H	ϕA	ϕC	刃數 NO.OF INSERT
HSFMC065-22	65	22	20	50	10.4	18	62	4
HSFMC080-27	80	27	22	52	12.4	21	77	6
HSFMC100-32	100	32	25	52	14.4	45	97	8
HSFMC125-40	125	40	30	55	16.4	60	122	10
HSFMC150-40	150	40	30	55	16.4	60	147	10
HSFMC175-40	175	40	30	55	16.4	60	172	12

部品 PARTS

規格 SPECIFICATION	刀座 INSERT SEAT	防護片 CHIP- PROTECTOR	防護片螺絲 CHIP- PROTECTOR SCREW	平衡調整螺絲 Balance ADJUSTING SCREW	軸向調整螺絲 AXIAL ADJUSTING SCREW	側固螺絲 SIDE LOCK SCREW	鎖固螺絲 LOCKING SCREW	扳手 WRENCH	鑽石刀片 PCD
FMC103214-CC	CP101265	IS250835	BAS0510	AAS050	SAS0510	LS0620 (M6)	2.5 / 5	C0975XFR-PCD	
FMC103214-CC	CP101265	IS250835	BAS0510	AAS050	SAS0510	LS0620 (M6)	2.5 / 5	C0990R08-PCD	

建議切削條件一覽表 Recommended Cutting Conditions

工件材質 Workpiece Material	Facing 面銑		
	速度 Speed Vc (m / min)	每刃進給 Feed (mm / tooth)	最大切削深度 max. D.O.C (mm)
Non-ferric metal 鋁、銅、鎂等非鐵金屬	400 - 1000	0.1 ~ 0.4	1